

SECTION 7 EXPLODED VIEWS

Note:

- -XX and -X mean standardized parts, so they may have some difference from the original one.
- Items marked "*" are not stocked since they are seldom required for routine service. Some delay should be anticipated when ordering these items.

- The mechanical parts with no reference number in the exploded views are not supplied.
- Color Indication of Appearance Parts Example:

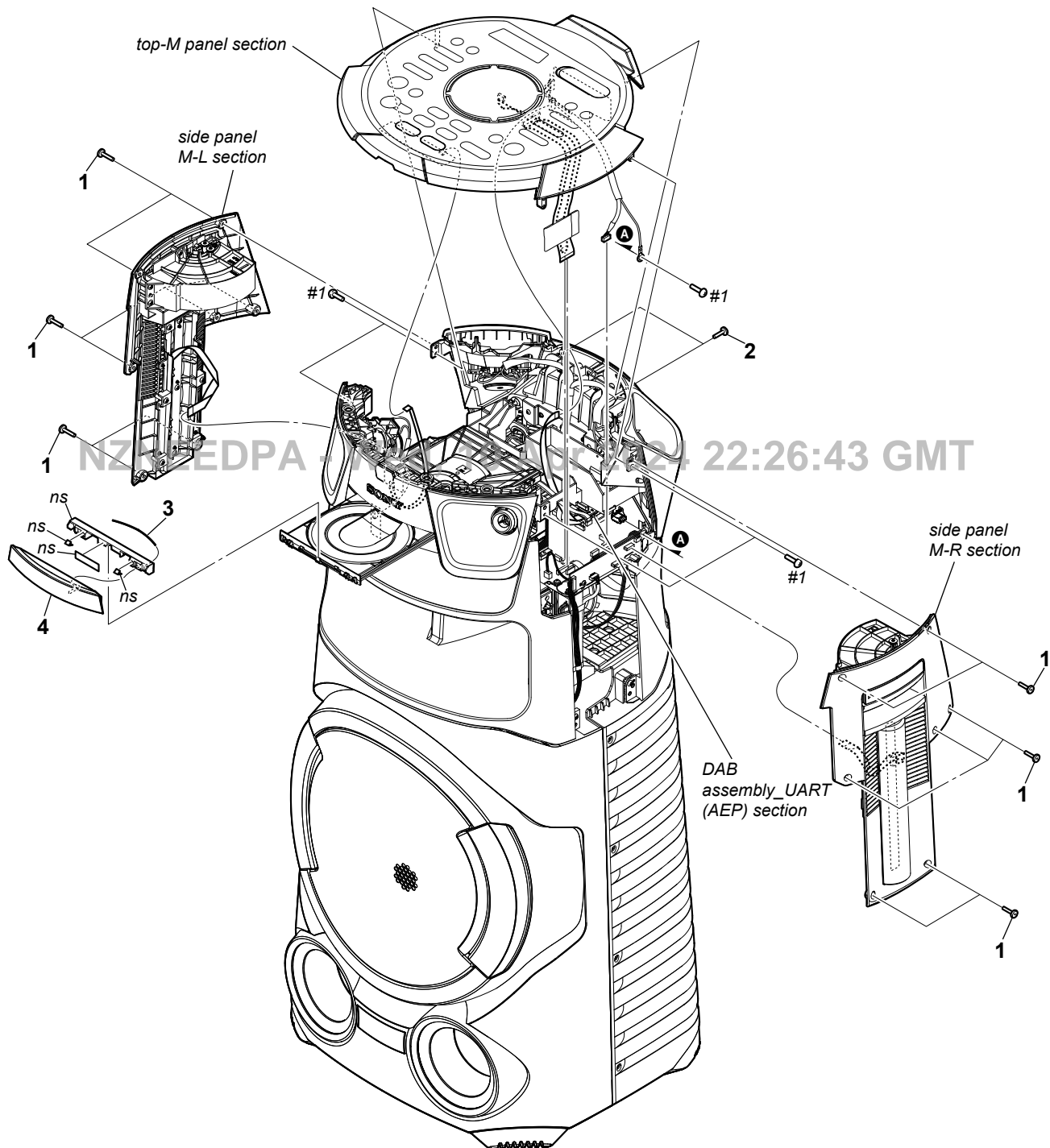
KNOB, BALANCE (WHITE) . . . (RED)

Parts Color Cabinet's Color

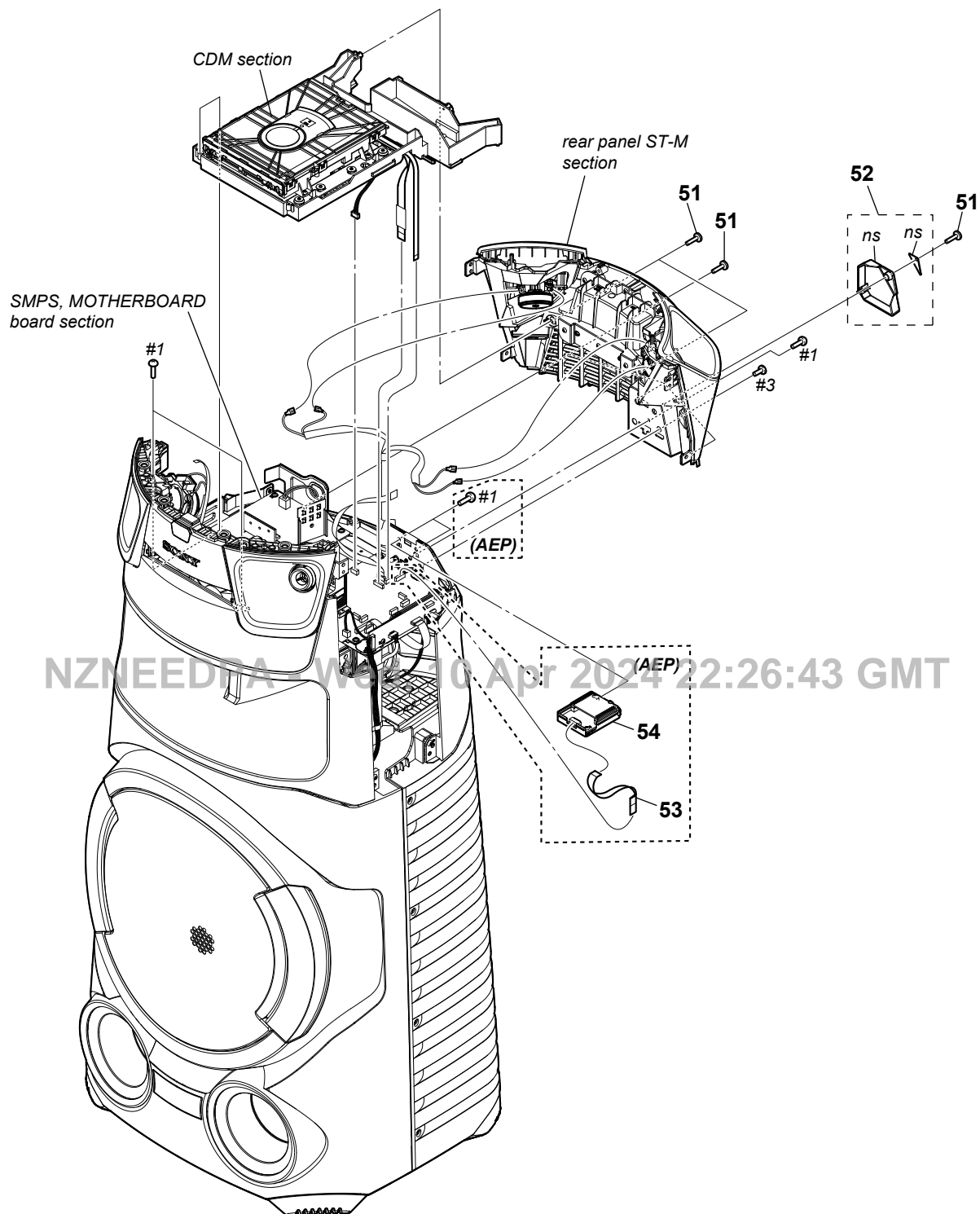
The components identified by mark \triangle or dotted line with mark \triangle are critical for safety.
Replace only with part number specified.

The components identified by mark \triangle contain confidential information.
Strictly follow the instructions whenever the components are repaired and/or replaced.

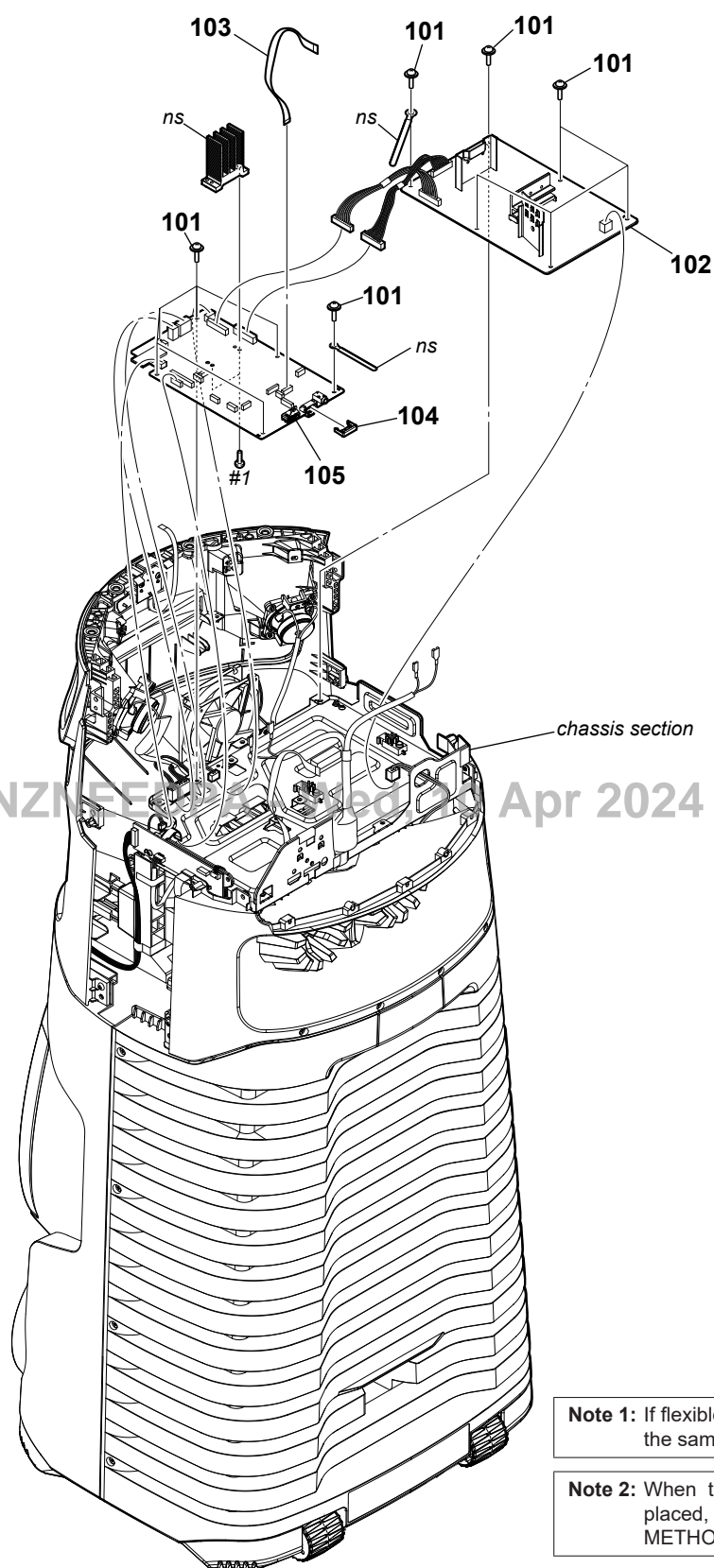
7-1. LOADING-M PANEL SECTION



7-2. DAB ASSEMBLY_UART (AEP) SECTION



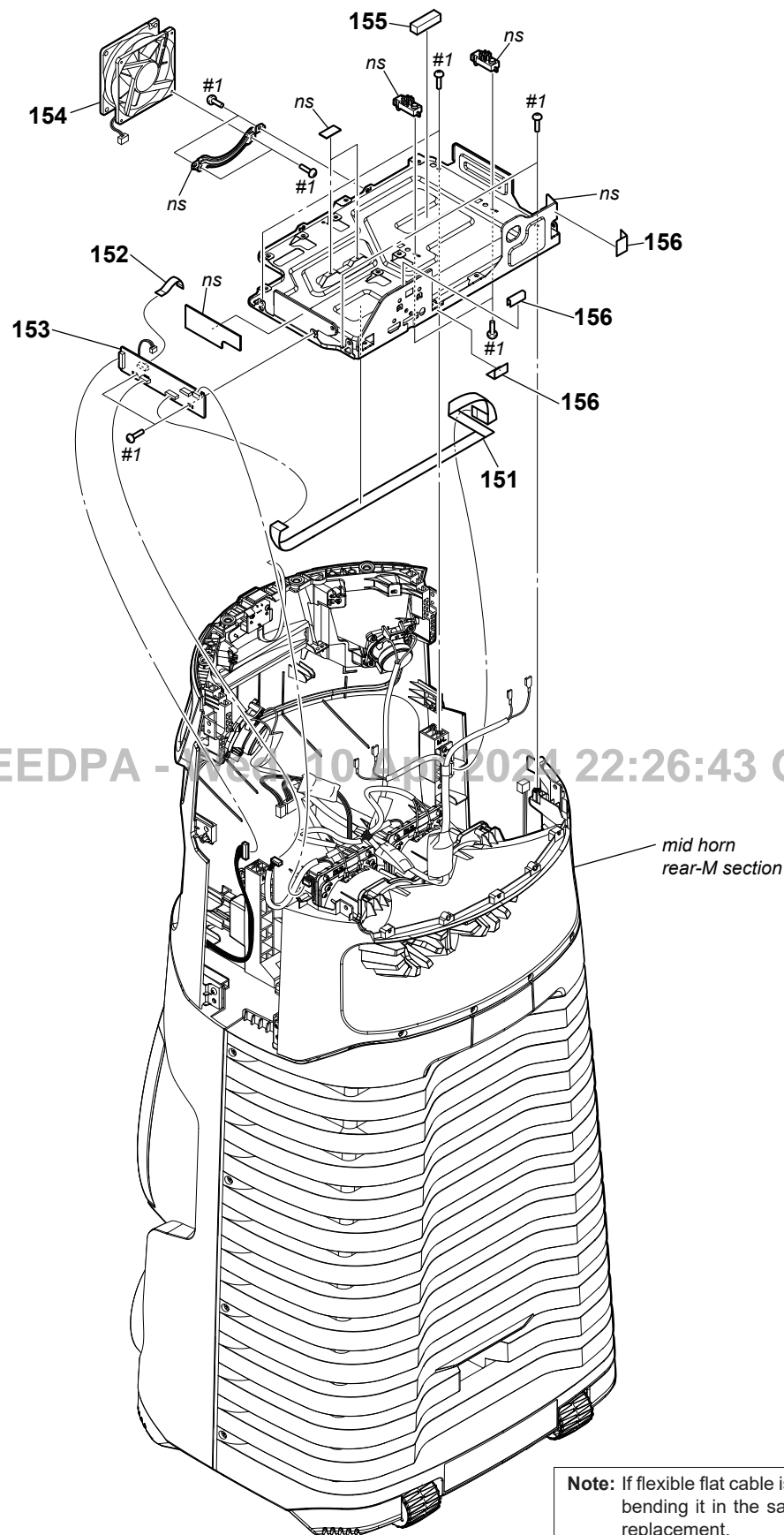
7-3. SMPS, MOTHERBOARD BOARD SECTION



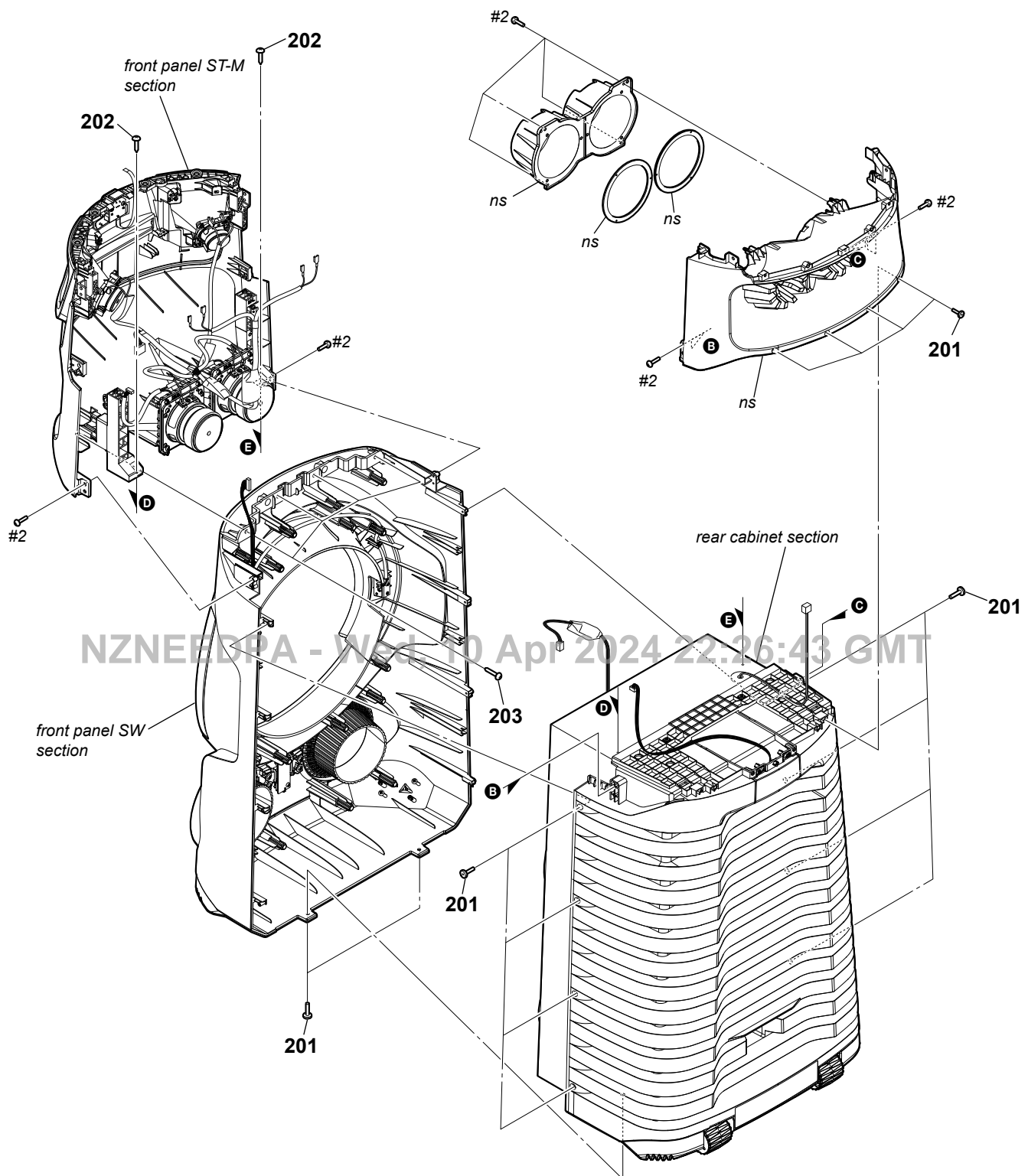
Note 1: If flexible flat cable is replaced, install it after bending it in the same form as that before replacement.

Note 2: When the MOTHERBOARD mounted pc board is replaced, be sure to refer to "DESTINATION SETTING METHOD" on page 6.

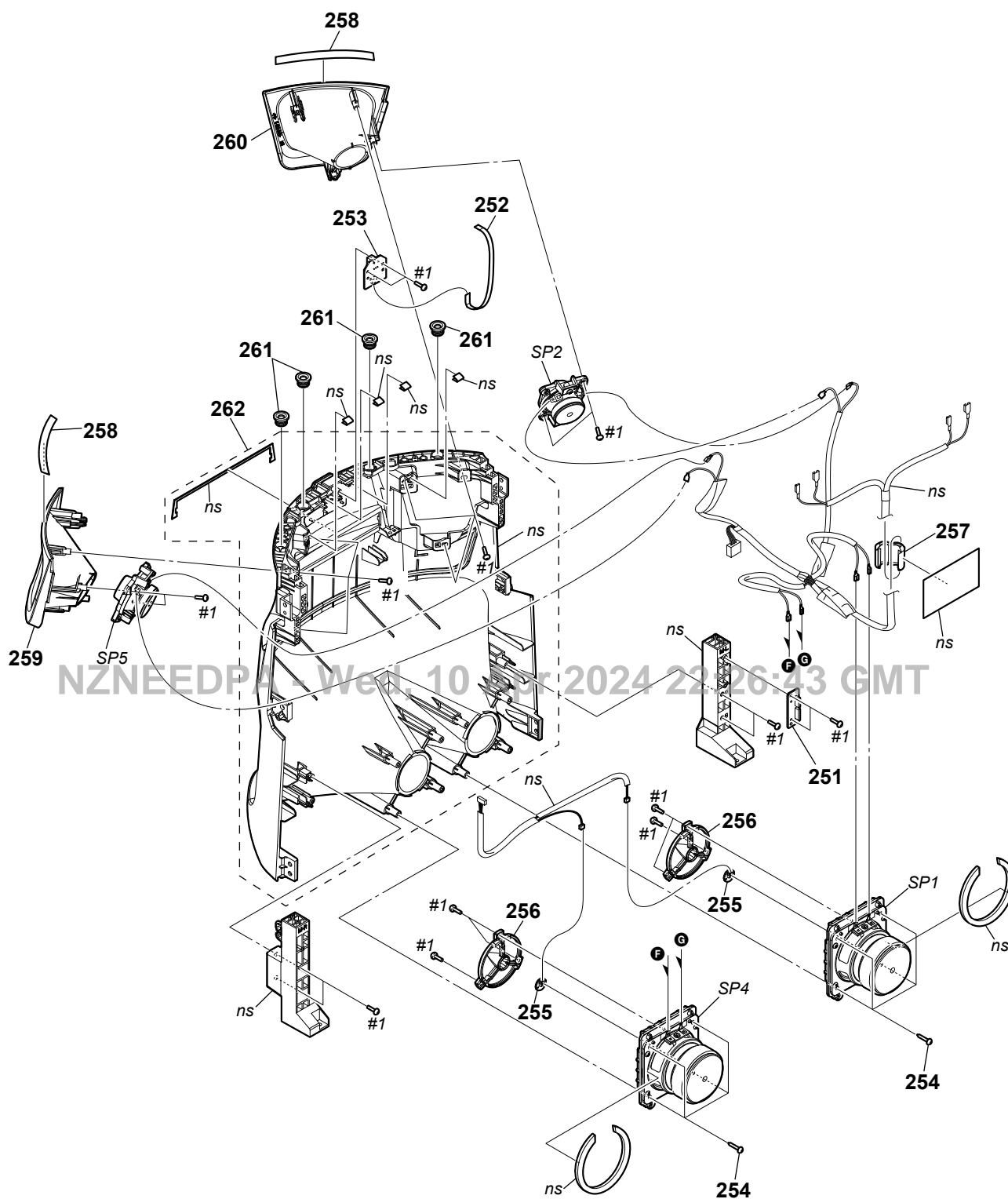
7-4. CHASSIS SECTION



7-5. MID HORN REAR-M SECTION

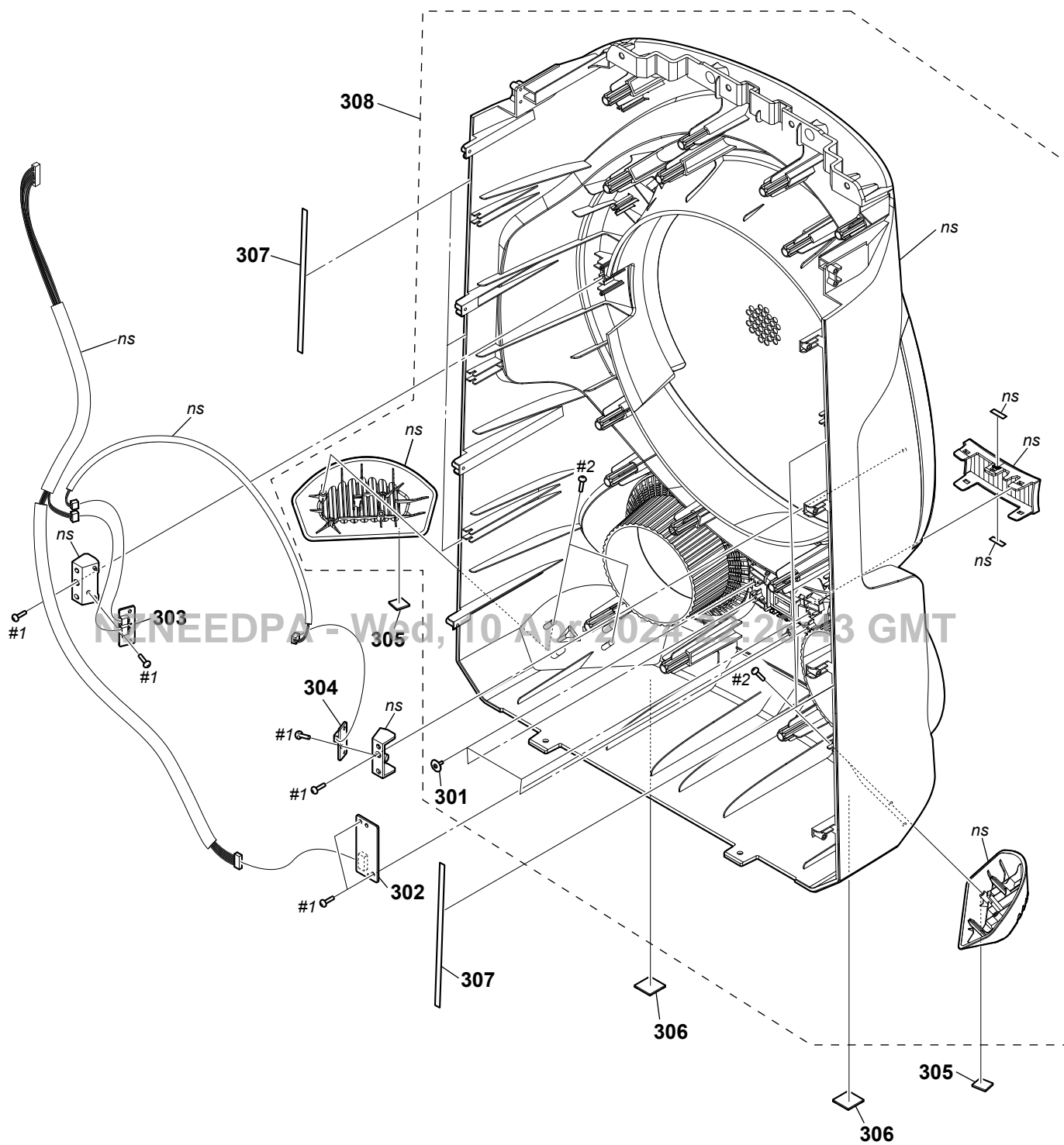


7-6. FRONT PANEL ST-M SECTION

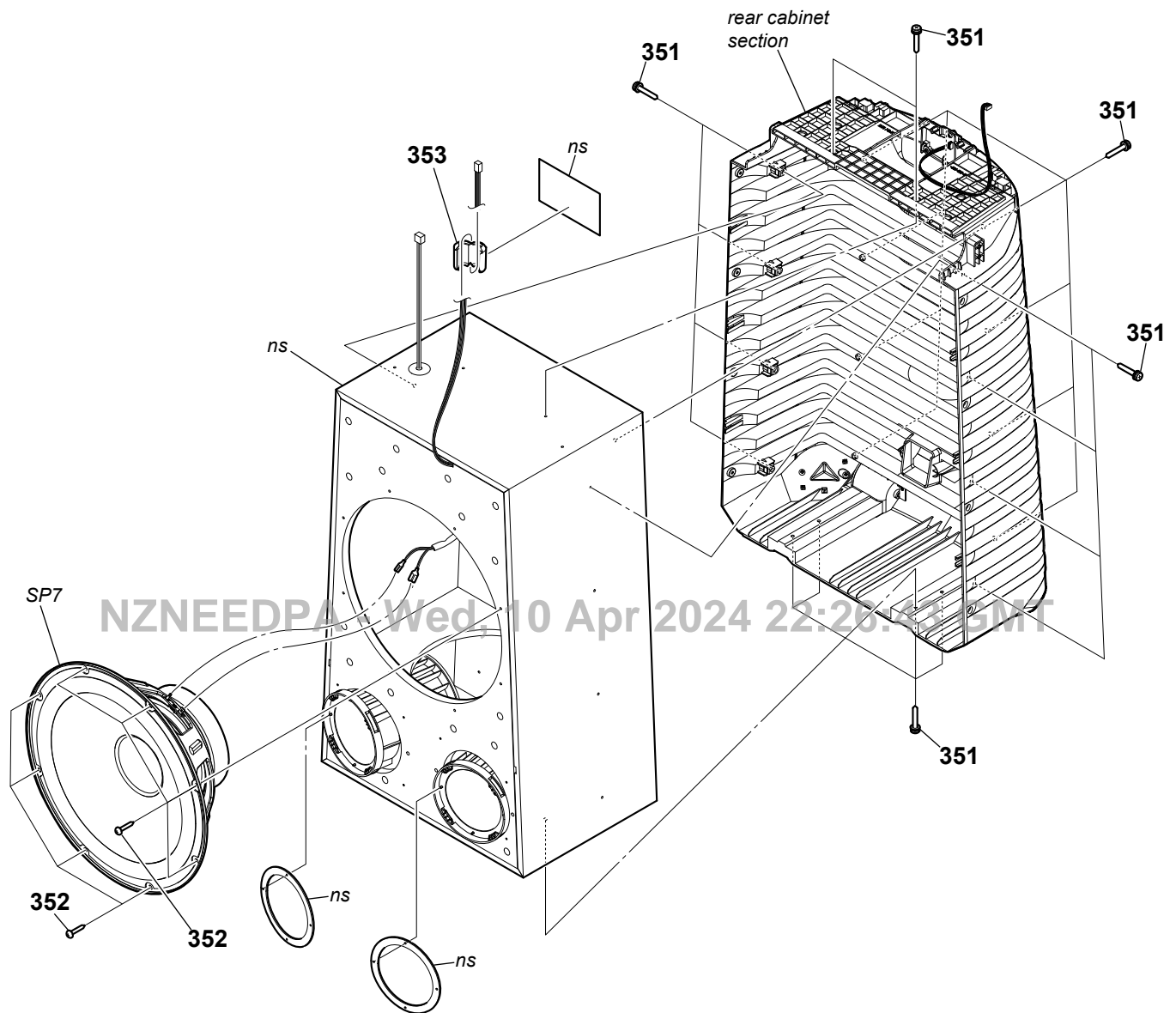


Note: If flexible flat cable is replaced, install it after bending it in the same form as that before replacement.

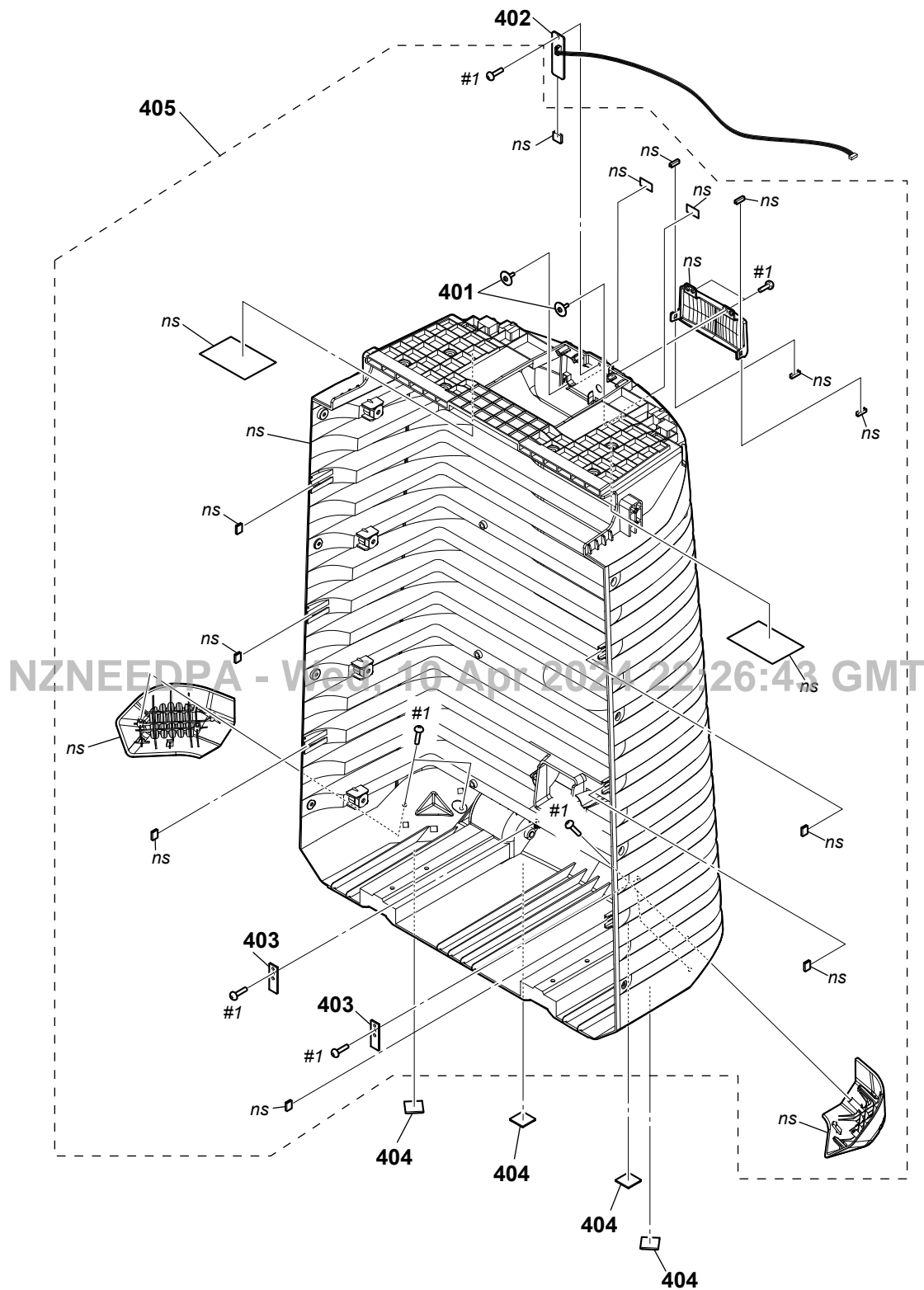
7-7. FRONT PANEL SW SECTION



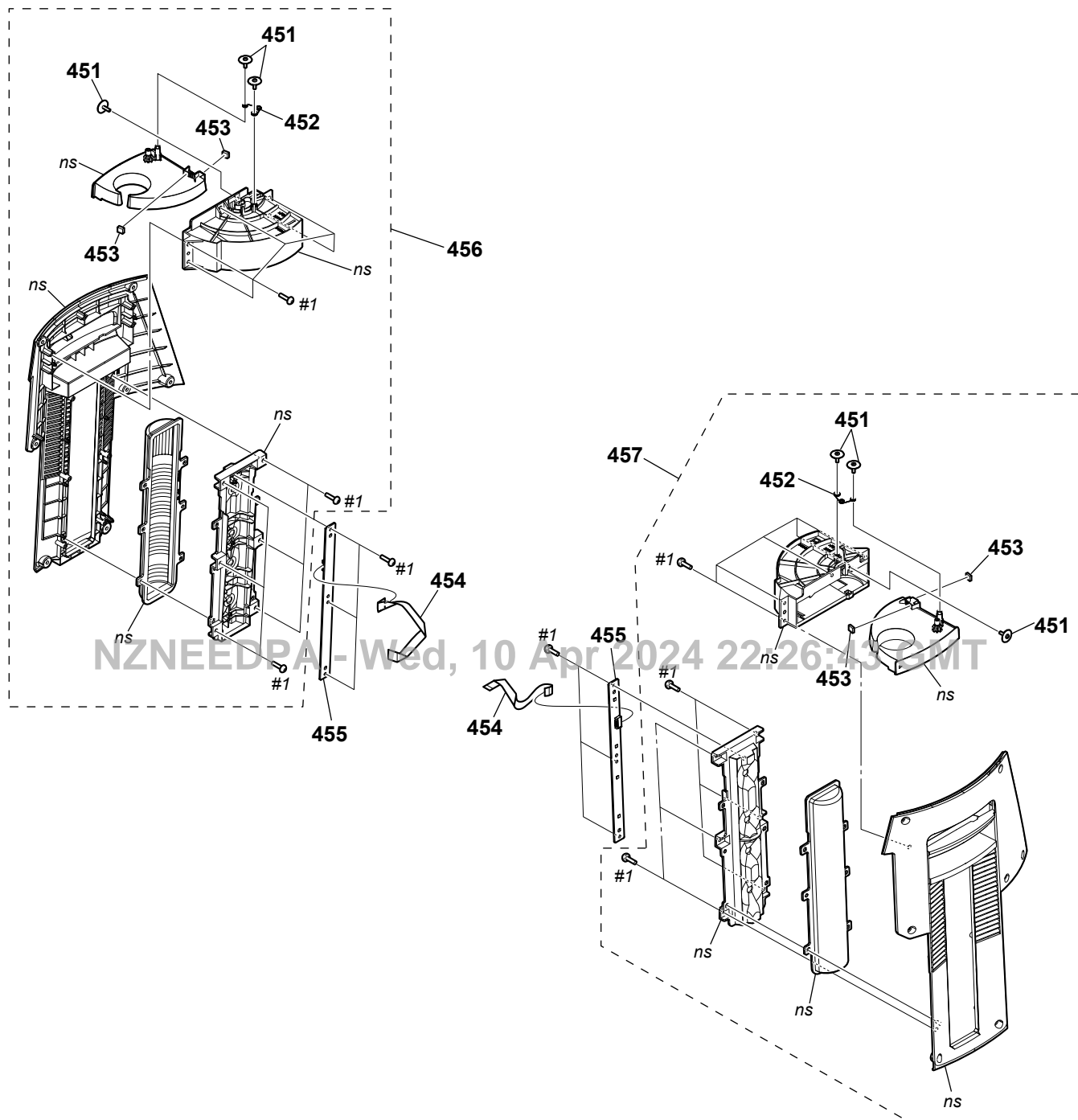
7-8. LOUDSPEAKER SECTION



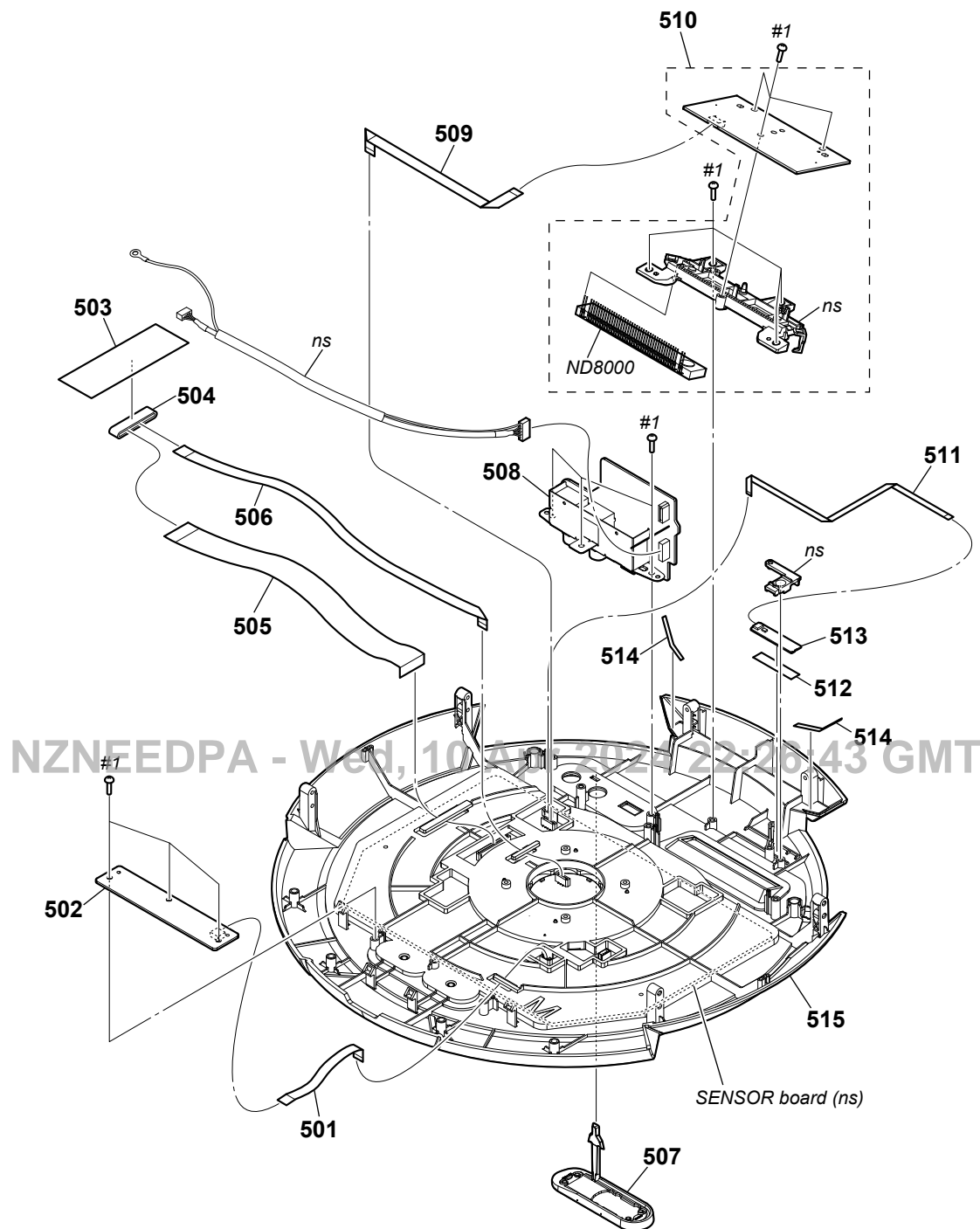
7-9. REAR CABINET SECTION



7-10. SIDE PANEL M-L, M-R SECTION

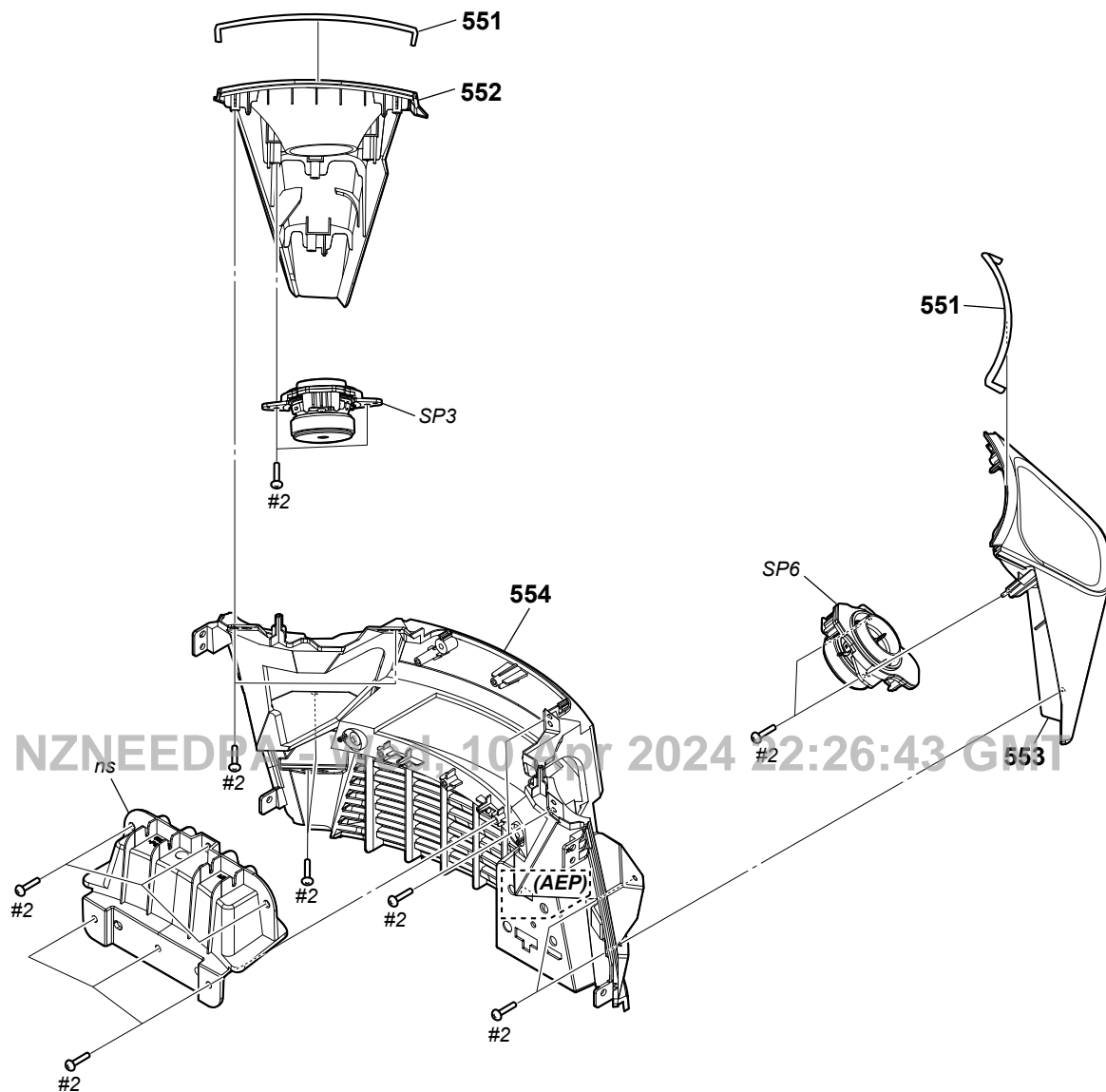


7-11. TOP-M PANEL SECTION

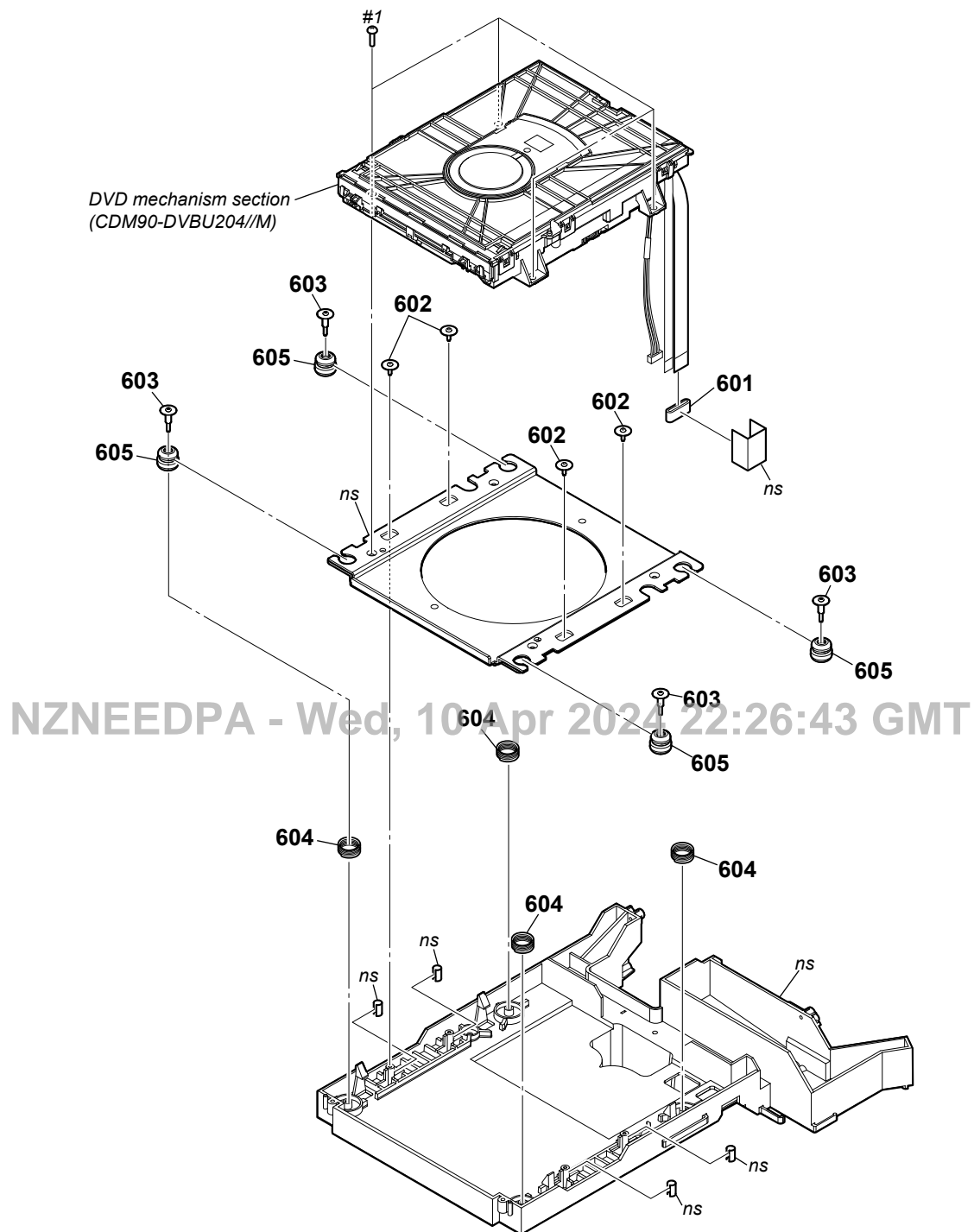


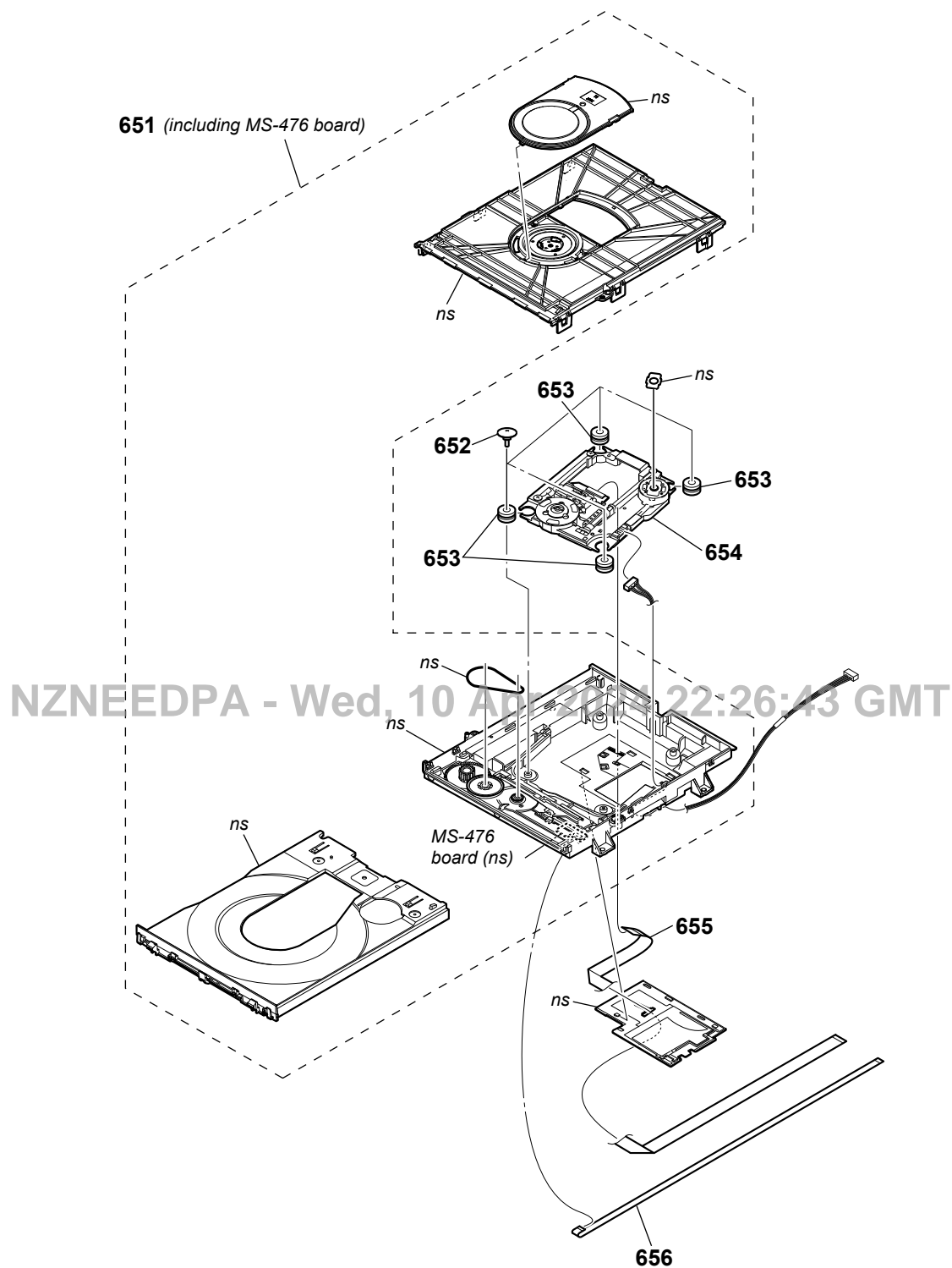
Note: If flexible flat cable is replaced, install it after bending it in the same form as that before replacement.

7-12. REAR PANEL ST-M SECTION



7-13. CDM SECTION



**7-14. DVD MECHANISM SECTION
(CDM90-DVBU204//M)**

Note: If flexible flat cable is replaced, install it after bending it in the same form as that before replacement.